

Over 30 Years of Excellence in  
Construction, Mining & Earthworks



**BUILDING**  
**THE FUTURE WITH**  
**PROVEN EXPERTISE**



Phone Number  
+91 9246233333



Email  
[hello@dcpl.online](mailto:hello@dcpl.online)

# About Company

Since 1997, Dhillon Construction Pvt. Ltd. (DCPL) has been a driving force in India's infrastructure sector. Starting as a small partnership firm, we've grown into a trusted private limited company known for delivering complex, large-scale projects across mining, earthworks, road development, and crushing operations.

With active operations in **Odisha**, our reputation is built on **technical excellence**, **operational reliability**, and a hands-on approach. Backed by a **state-of-the-art** equipment fleet and a highly skilled workforce, we ensure every project is delivered on time, within scope, and with a strong focus on safety and quality.

With over Three decades of industry experience, we proudly serve private sector clients, offering tailored infrastructure solutions built on trust, precision, and long-term value.



20+

Project Completed

157+

Heavy Equipment

370+

Skilled Workforce

## Vission

To lead with integrity by partnering with top industry professionals and leveraging high-quality materials and advanced equipment to ensure project success. We are committed to creating lasting impact through sustainable employment, empowerment of local talent, and meaningful community development in every region we operate.

## Mission

To deliver cost-effective, high-quality construction and mining solutions with a strong focus on safety, precision, and professionalism. We are committed to building long-term partnerships through timely execution, attention to detail, and a service-driven approach that consistently exceeds client expectations.





# Services & Our Capabilities



At **Dhillon Construction Pvt. Ltd.**, we offer a wide range of services across **earthworks, mining, civil infrastructure, screening & crushing, and project consultancy**. With over five decades of hands-on expertise, we deliver scalable, cost-effective, and timely solutions for both private and government sector clients.

## 1. Earthwork Contracts

We handle the full spectrum of land development and excavation needs — from site clearance to compacting and disposal. Whether the job involves large-scale industrial grading or residential lot leveling, our team executes with precision and foresight.

### Service Scope

- Excavation and site development
- Demolition and land clearing
- Grading and compacting
- Backfilling, delivery, and disposal of fill material
- Rental of heavy earth moving machinery (HEMM) and dumpers

### Major Achievement

DCPL successfully executed complete land development for the AM/NS Iron Ore Beneficiation Plant at Sagasahi Mines (via Balajee Infratech). The scope including excavation of 8 lakhs CBM earthworks, soil grading, backfilling, and disposal of fill material — ensuring site readiness for plant infrastructure construction within scheduled timelines.



## 2. Mining Services

DCPL has deep expertise in handling all phases of mining—from overburden removal to ore shifting and road maintenance—particularly in iron ore and manganese belts across India.

### Service Scope

- Overburden Removal
- Internal Shifting & Transportation
- Maintenance of Internal Roads
- Manganese and Iron Ore Mining Support
- Drilling & Controlled Rock Breaking

### Major Achievement

Principal contractor for S.R. Rungta Group, consistently managing large-scale excavation, overburden removal, and ore handling at approx 5million tons per year across Sanindpur, Oraghat, and Teherai Mines in Odisha — year after year.



## 3. Mobile Screening & Crushing

We deploy high-capacity mobile units for material sizing and processing, helping clients save transport time and reduce material handling overheads.

### Service Scope

- On-site Crushing (up to 250 TPH)
- Mobile Screening for Ore & Aggregate
- Stockpile Management

### Major Achievement

We deployed and operated 2 × 250 TPH Terex Power Screening and Crushing Plants to support Rungta Sons Private Ltd. This on-site material processing improved efficiency and reduced ore wastage.





## 4. Civil Works & Road Construction

Our civil infrastructure division delivers high-quality industrial roads, site concreting, and foundation works for factories and plants.

### Service Scope

- Road Construction & Maintenance
- Drainage Works
- Concrete Supply
- Industrial Land Infrastructure Setup

### Major Achievement

Delivered civil works and road construction as a subcontractor for Sadbhav Engineering Ltd., Ahmedabad. Scope included earthworks, road formation, drainage, and asphalt surfacing. Our skilled team and modern equipment ensured timely, safe, and high-quality execution supporting the success of the main project.

## 5. Project Management & Engineering Consultancy

We support clients through every phase of execution — from mobilization to commissioning — using structured project management practices and quality-first processes.

### Service Scope

- Project Planning & Execution
- Scope, Risk, and Change Management
- Procurement & Resource Planning
- Engineering Consultancy for Earthwork, Mining & Civil Projects

### Major Achievement

At JSPL Sarada Mines, DCPL managed internal ore shifting and dump operations. Our team ensured smooth coordination of equipment and manpower, contributing to efficient material flow and timely project execution.



## 6. Supply Of Heavy Earthmoving Equipment With Heavy Skilled Manpower

We provide technically trained professionals tailored to operational needs — and assist clients in structuring teams for performance and efficiency.

### Service Scope

- Recruitment of Engineers, Operators, Technicians, Welders
- Skills Audits & Training Programs
- Career Development Planning
- Organizational Structuring

### Our Resources

## Heavy Excavators



### Major Achievement

DCPL provided skilled manpower—including operators, welders, and technical staff—for projects with Rungta Sons Pvt Ltd and with Balajee Infratech at AM/NS's Sagasahi Mines. Our recruitment and deployment process ensured uninterrupted operations and site efficiency across all active locations.



Tata  
Hitachi

### MINING EXCAVATOR

The ZAXIS 650H provides reliable performance, great fuel economy, swift front movement and easy operation. A rugged and tough machine, this excavator is effective for challenging job sites and is suited for long term projects because of its long product life.

Available Models

**ZX-650H | ZX - 470 | ZX-470H | ZX - 370 | EX-200**



Kobelco

### EXCAVATOR

Kobelco has always kept its promise regarding 5 key aspects of Excavators: Engine & PowerTrain, Fuel Efficiency, Durability & Reliability, Advanced Mechatronics, and Safety & Comfort. Every Excavator that rolls out of the Kobelco stables comes with the Kobelco Promise and lives up to the trust gained over decades.

Available Models

**SK-210 LC-8 | SK380 HDLC**



L&T  
Komatsu

## KOMATSU EXCAVATOR

Komatsu is a very popular name in the heavy construction equipment segment. The Excavator model from Komatsu is one the best Construction machines in heavy loading work. This Excavator also comes with an operating weight of 7050 Kg, which increases your output. Here you quickly get the Komatsu PC71 price in India with all its

Available Models

**PC-300**



Mitsubishi  
Motor Grader

## Motor Grader

Mitsubishi produces several products for construction machinery, such as bulldozers, motor graders and wheel loaders. Find an overview of these products below to see which Mitsubishi engine has been used in these products.

Available Models

**MG-330**



Komatsu  
Motor Grader

## Motor Grader

The Komatsu Motor Grader GD511A-1 is a popular and powerful construction machine known for its efficiency in highway, road, and infrastructure projects. It features a 135 horsepower engine and a 227-liter fuel tank, enabling extended operation without frequent refueling.

Available Models

**GD511A-1**



Atlas  
Copco

## DTH Crawler Drills

Kobelco has always kept its promise regarding 5 key aspects of Excavators: Engine & PowerTrain, Fuel Efficiency, Durability & Reliability, Advanced Mechatronics, and Safety & Comfort. Every Excavator that rolls out of the Kobelco stables comes with the Kobelco Promise and lives up to the trust gained over decades.

Available Models

**ICM-260 : Hole Diameter: 105–115 mm**





**Shantui  
Bulldozer 160HP**

### Shantui – Bulldozer

Shantui's self-manufactured drive system perfectly aligns with the engine curve, resulting in substantial traction and enhanced transmission efficiency. The machine is equipped with a straight tilt blade for enhanced cutting force, making it well-suited for diverse working conditions such as clay, frozen soil, and sandy soil.

Available Models

**SD16E**



**Volvo  
Compactor**

### Volvo – Soil Compactors

The robust Volvo SD110BA single-drum compactor was the complete package — combining performance, versatility and serviceability with safety and comfort. Packed with advanced technology, the SD110BA had all the flexibility and power you needed to ensure quality compaction, without compromising fuel efficiency.

Available Models

**SD-110BA | SD-110BA | SD-110**



**Liebherr  
Wheel Loader**

### Liebherr – Wheel loaders

Liebherr wheel loaders offer maximum performance even in the harshest conditions. Specially developed components, sophisticated technology and high-quality materials ensure maximum reliability and availability. The Liebherr weighing system serves as a checking scale and functions automatically and intelligently.

Available Models

**L566 | L-550 | L-580**



**Luigong  
Loader**

### Luigong – Wheel loaders

In tough quarrying and mining environments, there's no room for guesswork. You need to know that your wheel loader can easily handle all the strenuous day-to-day tasks with speed, economy and unending stamina. Your business credibility ultimately depends on your machine's operating performance.

Available Models

**CLG-856**





## Hindustan Payloader

### Hindustan – Wheel loaders

CAT 2021D is a highly popular Wheeled Loader in India. The full-turn static tipping load (FTSTL) value of this wheeled loader is 6423. It is available at a price of ₹ 29 Lakh. This wheeled loader comes with a bucket capacity of 1.53 – 3.0 m<sup>3</sup> and has a Ground Clearance of 367. The engine of this wheeled loader delivers a power of 133 Hp.

Available Models

**2021D**



## Tata Wheel Loader

### Tata – Wheel Loader

An indigenous wheel loader, the TL360Z incorporates both the Z-bar linkage and power-shift transmission technology. This machine focuses on productivity and all its features enhance this parameter. This machine has the highest reach in its class and has the highest travel speeds in its initial gears.

Available Models

**TL-360 Z**



## Tata Prima Tipper

### Tata – Heavy Duty Tippers

Part of the series of heavy-duty commercial vehicles, the Tata Prima 3530.K HRT, is equipped with the latest safety, driveability, and productivity enhancements. Delivering unmatched performance and durability, it makes for a perfect match for any business logistics.

Available Models

**Tata Prima 3530 | Tata 2528**



## Eicher Volvo

### Eicher – Heavy Duty Tippers

The tipper is designed to deliver superior performance, higher productivity, uptime and greater revenues with increased power & torque, multi options to suit various business need and applications now comes with Hub Reduction Tandem Axle (HRT).

Available Models

**3235**



## Bharat Benz Tippers

### Bharat Benz – Heavy Duty Tippers

BharatBenz produces the best in class Heavy duty tipper trucks for off road and on road purposes.

Available Models

**2528C**



## L&T Scania Tipper

### L&T Scania – Heavy Duty Tippers

The L&T SCANIA G440XT Tipper Truck, a high-performance dumper designed to exceed your expectations. This exceptional truck, brought to you by L&T, offers unmatched reliability and efficiency. With its powerful engine and robust construction, it effortlessly tackles heavy-duty tasks, making it ideal for construction sites.

Available Models

**G440 | P380**



## Okada Hydraulic Breaker

### Hydraulic Rock Breakers

Precision machining processes and strict Okada quality control are used to produce all main breaker components. There is no need for complete assembly replacements and the use of high precision parts mean economical, labor-saving rebuilds of your Okada breaker.

Available Models

**OKADA 3700HD**



## Rock Breaker

### Hydraulic Rock Breakers

DOZCO Rock Breaker is a heavy-duty attachment engineered for primary/secondary breaking and quarrying. It offers exceptional power and reliability. With its robust construction and advanced features, the DOZCO Rock Breaker 2200A is built to handle demanding rock breaking operations.

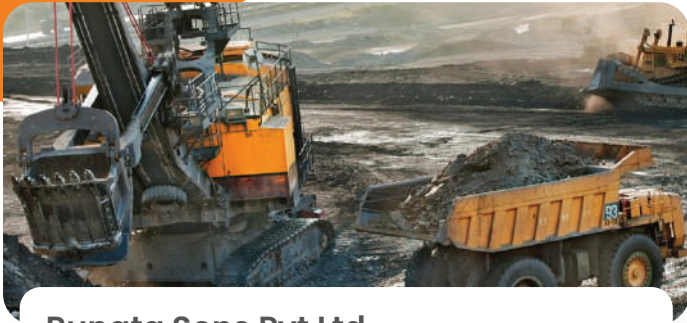
Available Models

**EDIT-3200 | EDIT-2200 | INDECO HP-4000**



# Projects

## Current/Ongoing Projects (FY 2025-26)



### Rungta Sons Pvt Ltd

Iron ore mining & removal of over burden and maintenance of internal roads

Location : **Odisha**

Value : **₹75,000 lacs**



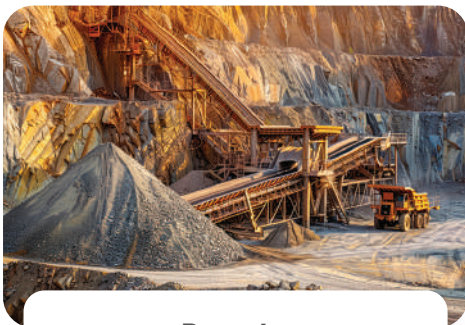
### Balajee Infratech & Constructions Pvt Ltd

Supply of Ready-Mix Concrete at project site for AM&NS

Location : **Koira**

Value : **₹13,508 lacs**

## Completed Projects



### Rungta Sons Pvt Ltd

(FY 2017-18 to FY 2024-25)

Location  
**Odisha**

Value  
**₹36,103.95 lacs**

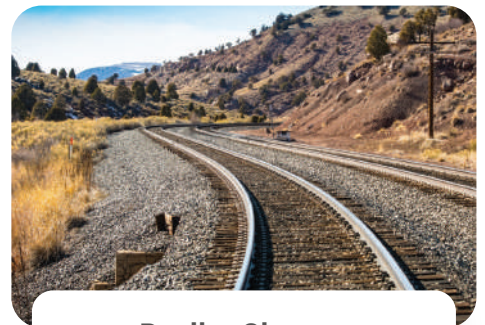


### Braj Mining Corporation Pvt Ltd

(FY 2021-22)

Location  
**Odisha**

Value  
**₹115.02 lacs**



### Radhe Shyam Subhadra JV

(FY 2016-17 to FY 2020-21)

Location  
**Sundargarh**

Value  
**₹353.39 lacs**



### Tata Projects Pvt Ltd

(FY 2015-16 to FY 2016-17)

Location : **Secunderabad**

Value : **123.13 lacs**



### S.K. Sarawagi & Co

(FY 2018-19 to FY 2020-21)

Location : **Vizianagaram**

Value : **356.50 lacs**

Learn more about our projects at [dcpl.online](https://dcpl.online)



## Our Clients



**Over 30 Years of Excellence in  
Construction, Mining & Earthworks**



### Regd Office

Dhillon Construction pvt ltd, 217,  
TPT colony, N.E.Layout, Seethammadara,  
Visakhapatnam, 530013 , AP



### Corporate Office

No 306, Dutch House Apartment,  
Kirlampudi layout, Opp. Palm beach hotel  
Visakhapatnam, 530020 , AP



### Branch Office

Second Floor, Plot no 265/1116, Sading,  
Rajiv vihar, Barbil, Kendujhar,  
Odisha, 758035



### Phone Number

+91 9246233333



### Email

hello@dcpl.online